

The Project for Strengthening National Forest Resources Monitoring System for Promoting Sustainable Forest Management and REDD+

Overview

Democratic Republic of the Congo (DRC) has the largest forest in the Congo Basin and suffers from serious deforestation and forest degradation due to conversion of forests to agricultural lands, commercial logging, mining development and other factors. However, the country's forest resource inventory used as the basic information for forest management had not been adequately carried out. Therefore, technical skills and ability of interpreting satellite images, implementing ground surveys, and creating a database necessary for forest resource management need to be improved further.

The project is supporting DRC in developing forest base maps, inventorying forest resources, and developing a national forest reference emission level (FREL) in the former province of Bandundu, since these three components are essential to develop National Forest Monitoring System in the country. With such supports, DRC is expected to practice sustainable forest management by using information acquired through monitoring forest resources, as well as to proceed with its climate change response efforts with the framework of REDD+.



Project Site

Kwilu, Kwango, and Mai-Ndombe provinces (former Bandundu province)

Implementing Organization

Directorate of Forest Inventory and Development, Ministry of Environment and Sustainable Development

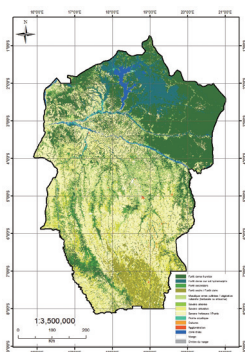
Duration

May 2012—Dec. 2017

Purpose

National forest resources inventory system is established, as a basis of National Forest Monitoring System, with development of forest base maps and Forest Reference Emission Level (FREL) in former Bandundu province.

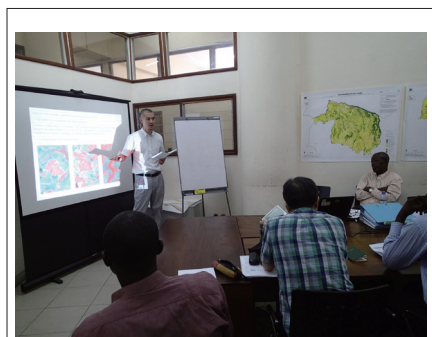
Activities/Outputs



Development of forest base map of 2010 using ALOS high-resolution images.

Forest inventory with less than 10% error rate.

Development of Inventory methodology and field manual.



Capacity building through OJTs and training in DRC and Japan.

Development of guidelines and manuals.